






Thermo Printer

Connection to Witschi devices


Bluetooth

ProofMaster®		
	Bluetooth kit II for printer Insert + dongle 95.1511	USB Bluetooth dongle for additional device JB15-BT851
WatchExpert (G4) Chronoscope® X1 (G3) Chronoscope® S1 (G2) WisioScope® S		
	Bluetooth kit for printer Insert + dongle 95.1510	USB Bluetooth dongle for additional device JB15-BT900-US

USB

ProofMaster®	
	Interface cable USB* JB03-32.04.1086

RS232

Analyzer Twin Analyzer Q1 Analyzer Q2 Newtech Handy II Chronoscope® S1 (G1/G2) WatchExpert III Proofmaster® S Proofmaster® M Qualimaster	
	Interface cable RS232* 95.13.203

WatchExpert G4 WisioScope® S Chronoscope® X1 Chronoscope® X1 (G2) Chronoscope® X1 (G3)		
	Interface cable* GA05-E715251	Interface cable RS232* 95.13.203



Thermo printer
JB01-SLK-TE25-S

*) Component included in the delivery scope of the printer.

Witschi Electronic AG

Bahnhofstrasse 26 | 3294 Büren an der Aare | Switzerland
Tel. +41 (0)32 352 05 00 | welcome@witschi.com | www.witschi.com

witschi

LEADING SWISS PRODUCTS

Thermo Printer

Changing interface: RS232 to Bluetooth



(1) Loosen the 2 screws of the insert.



(2) Remove the RS232 insert.



(3) Note your verification number for Bluetooth. Insert the Bluetooth slot.



(4) Tighten the Bluetooth slot with 2 screws.

Thermo Printer

Bluetooth Configuration



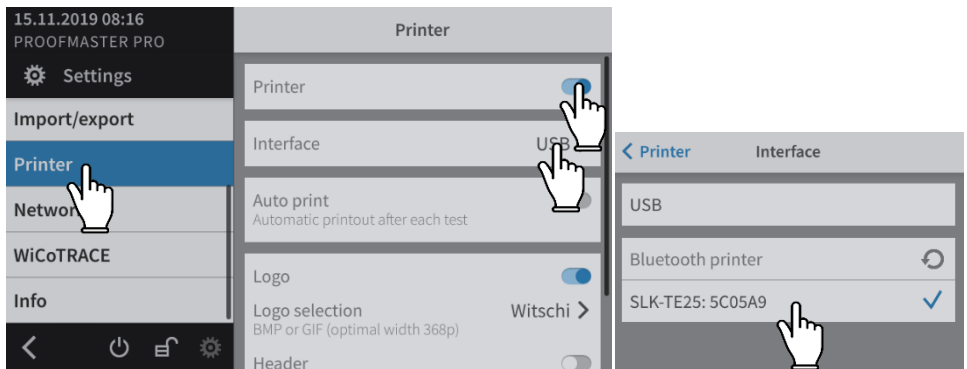
First insert the Bluetooth Dongle in the USB port.

The Bluetooth verification number is shown on the USB slot of your thermo printer.

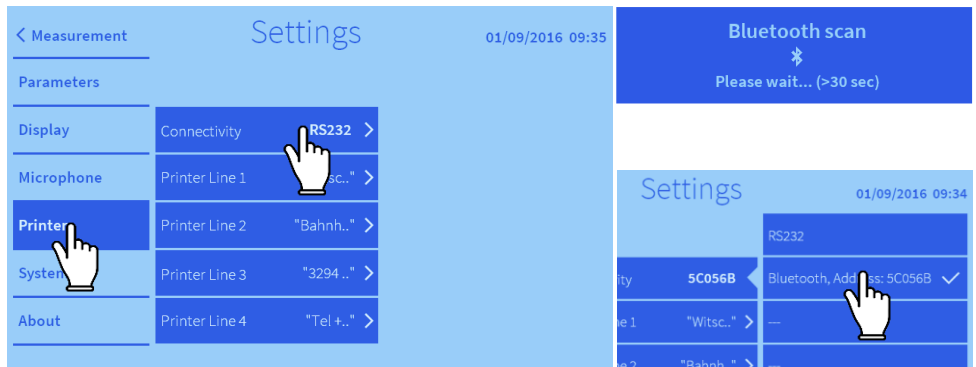


Please see the manual of the respective device for further information about the configuration of the printer.

ProofMaster®



WATCH EXPERT



Witschi Electronic AG

Bahnhofstrasse 26 | 3294 Büren an der Aare | Switzerland

Tel. +41 (0)32 352 05 00 | welcome@witschi.com | www.witschi.com

JB01-SLK-TE25-S_D36e – 11/2019

Thermo Printer

Chronoscope X1 (G3)

Chronoscope S1 (G2)

WisioScope® S

The image shows a sequence of three screenshots from a Witschi device's menu system. The top screenshot displays the 'System' settings menu with various options like Language, Keyboard, and Wait. A hand cursor is pointing at the 'System' menu item. The middle screenshot shows the 'Bluetooth scan' dialog box with the text 'Please wait'. The bottom screenshot shows the 'Printer' selection screen, listing 'Bluetooth SLK-TE25, Address: 5C0570' as the selected printer. A hand cursor is pointing at this entry. Below the main screenshots, a partial view of the 'System' settings menu is visible, showing the 'Printer' field set to '5C0570'.

System Language: **English** Key sound: **Silent**
Keyboard: **QWERTZ** Polar: **On**
Screen Saver: **Standby** MMC Volume: **2**
Wait: **10 min** Printer: **RS-232**
Brightness screen: [Slider]
Pictures: **Import** **Export** **Delete**
System: **Import** **Export** System log: **Off**
Default **Ok**

Bluetooth scan
Please wait

Printer
Bluetooth SLK-TE25, Address: 5C0570
RS-232
Bluetooth SLK-TE25, Address: 5C0570
Cancel **Printer**

Program Screen Saver: **Standby** MMC Volume: **2**
Security Wait: **10 min** Printer: **5C0570**
Measurement Brightness screen: [Slider]
Diagram

Witschi Electronic AG

Bahnhofstrasse 26 | 3294 Büren an der Aare | Switzerland

Tel. +41 (0)32 352 05 00 | welcome@witschi.com | www.witschi.com

JB01-SLK-TE25-S_D36e - 11/2019